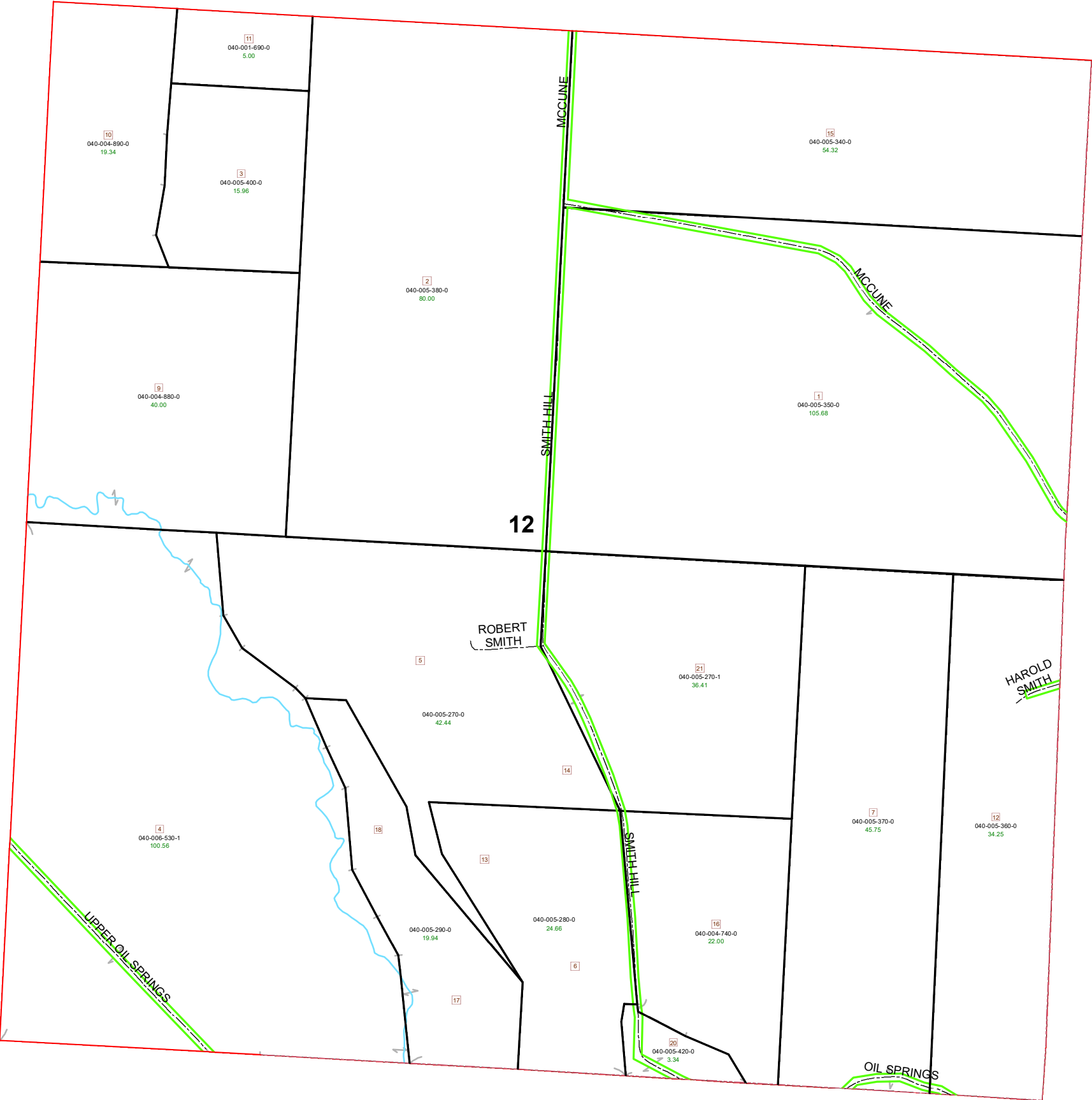


# DEERFIELD TOWNSHIP SECTION 12 R13- TWP 9 MORGAN COUNTY, OH



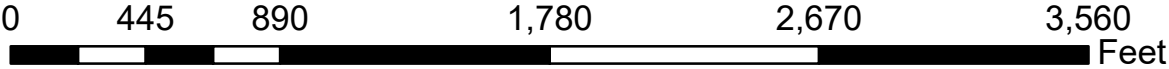
PIN	VOL	PAGE	Owner	LegalDescr	Acres
040-006-530-1	OR31	313	HILL DARRIN A & HEATHER M	R13 T09 S12 SD 4	100.56
040-001-690-0	D.V 199	110	LETT LEONA MAY	R13 T09 S12 SD 11	5
040-004-880-0	OR188	568	MUETZEL JOHN R TRUSTEE, ROBERT N TRUSTEE & TH	R13 T09 S12 SD 9	40
040-004-890-0	OR188	568	MUETZEL JOHN R TRUSTEE, ROBERT N TRUSTEE & TH	R13 T09 S12 SD 10	19.341
040-005-280-0	OR218	691	SMITH DOUGLAS W	R13 T09 S12 SD 6-13	24.66
040-005-290-0	OR218	691	SMITH DOUGLAS W	R13 T09 S12 SD 17-18	19.94
040-005-270-0	OR218	691	SMITH DOUGLAS W	R13 T09 S12 SD 5-14	42.44
040-005-360-0	OR234	1467	SMITH FAMILY ACRES AN OHIO LIMITED LIABILITY CO	R13 T09 S12 SD 12	34.25
040-005-370-0	OR234	1467	SMITH FAMILY ACRES AN OHIO LIMITED LIABILITY CO	R13 T09 S12 SD 7	45.75
040-005-350-0	OR234	1467	SMITH FAMILY ACRES AN OHIO LIMITED LIABILITY CO	R13 T09 S12 SD 1	105.68
040-005-400-0	OR234	1467	SMITH FAMILY ACRES AN OHIO LIMITED LIABILITY CO	R13 T09 S12 SD 3	15.96
040-005-340-0	OR234	1467	SMITH FAMILY ACRES AN OHIO LIMITED LIABILITY CO	R13 T09 S12 SD 15	54.32
040-005-380-0	OR234	1467	SMITH FAMILY ACRES AN OHIO LIMITED LIABILITY CO	R13 T09 S12 SD 2	80
040-005-270-1	OR190	202	SMITH KEVIN D	R13 T09 S12 SD 21	36.41
040-004-740-0	OR215	643	SMITH RONALD L & SALLY I	R13 T09 S12 SD 16 SU	22
040-005-420-0	OR207	839	SMITH RONALD LEE & SALLY I	R13 T09 S12 SD 20 SU	3.34

**Boundaries**

- Future Split
- Parcel
- County
- Lot
- Section
- Township
- Symbols
- Roads

**Type**

- Hydro
- ROW



Source: Morgan County Engineer's Office  
 Author: Marcia Wolfe  
 Date: 5/21/2020



Disclaimer: The information that these maps contains is for reference purposes only. Please bring any errors to the attention of the Engineer's Office staff.  
 Thank you